
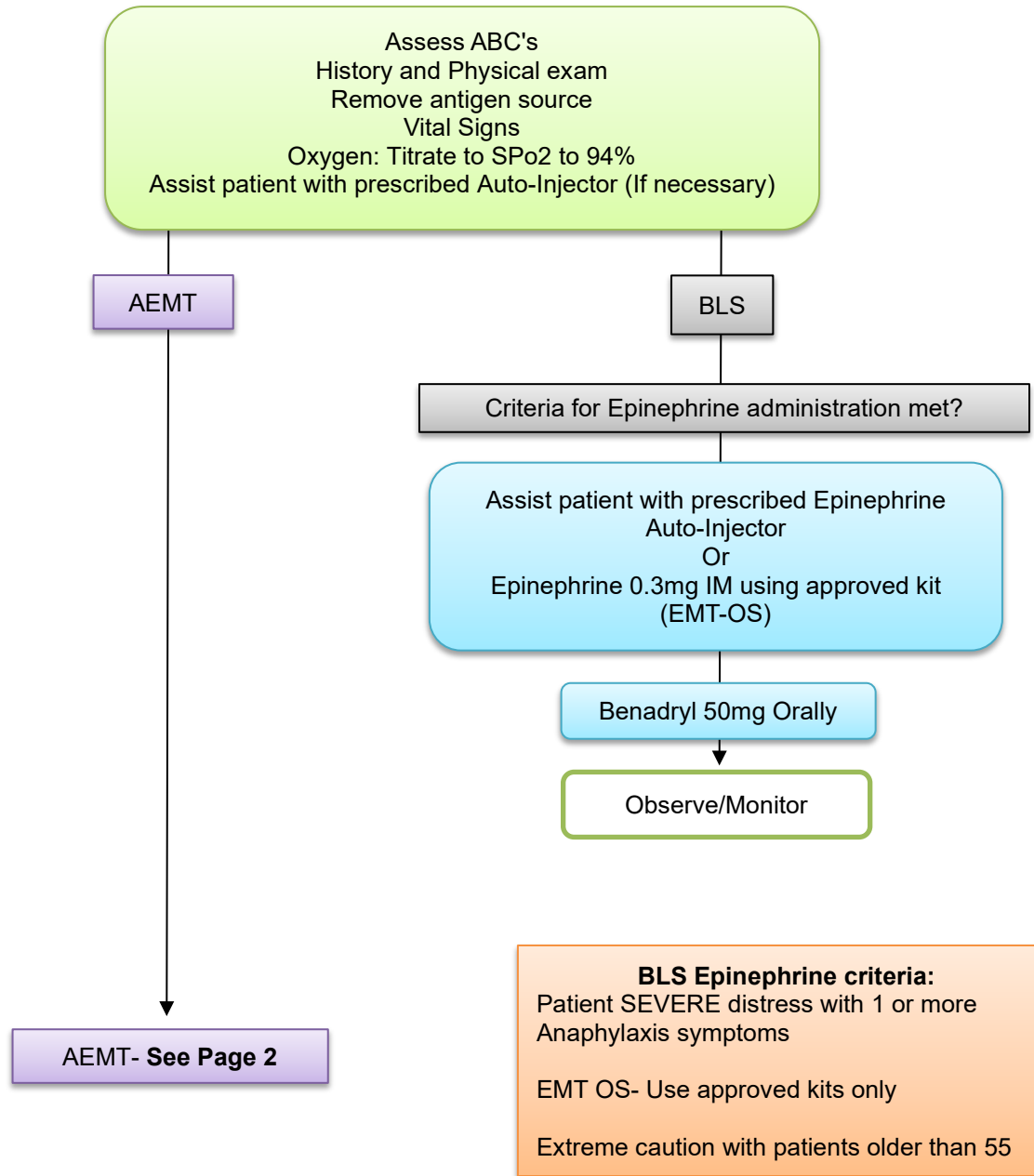


| | | |
|--|-------------------------|--------------------------------------|
|  | 19290 | AEMT Allergic Reaction / Anaphylaxis |
| Nor-Cal EMS Policy & Procedure Manual | Treatment Guidelines | |
| Effective Date: 5/1/2025 | Next Revision: 5/1/2028 | |
| Approval: Jeffrey Kepple MD – MEDICAL DIRECTOR | SIGNATURE ON FILE | |



Reaction Types:

Allergic reaction: Acute Onset of Hives, Pruritis, Flushing, or Rash

Anaphylaxis (1) One or more of the following:
Stridor, Wheezing, Hoarseness, Airway Edema, or Hypotension

Extremis (1) One or more of the following:
Systolic BP less than 90, Airway Compromise, Altered Mental Status

