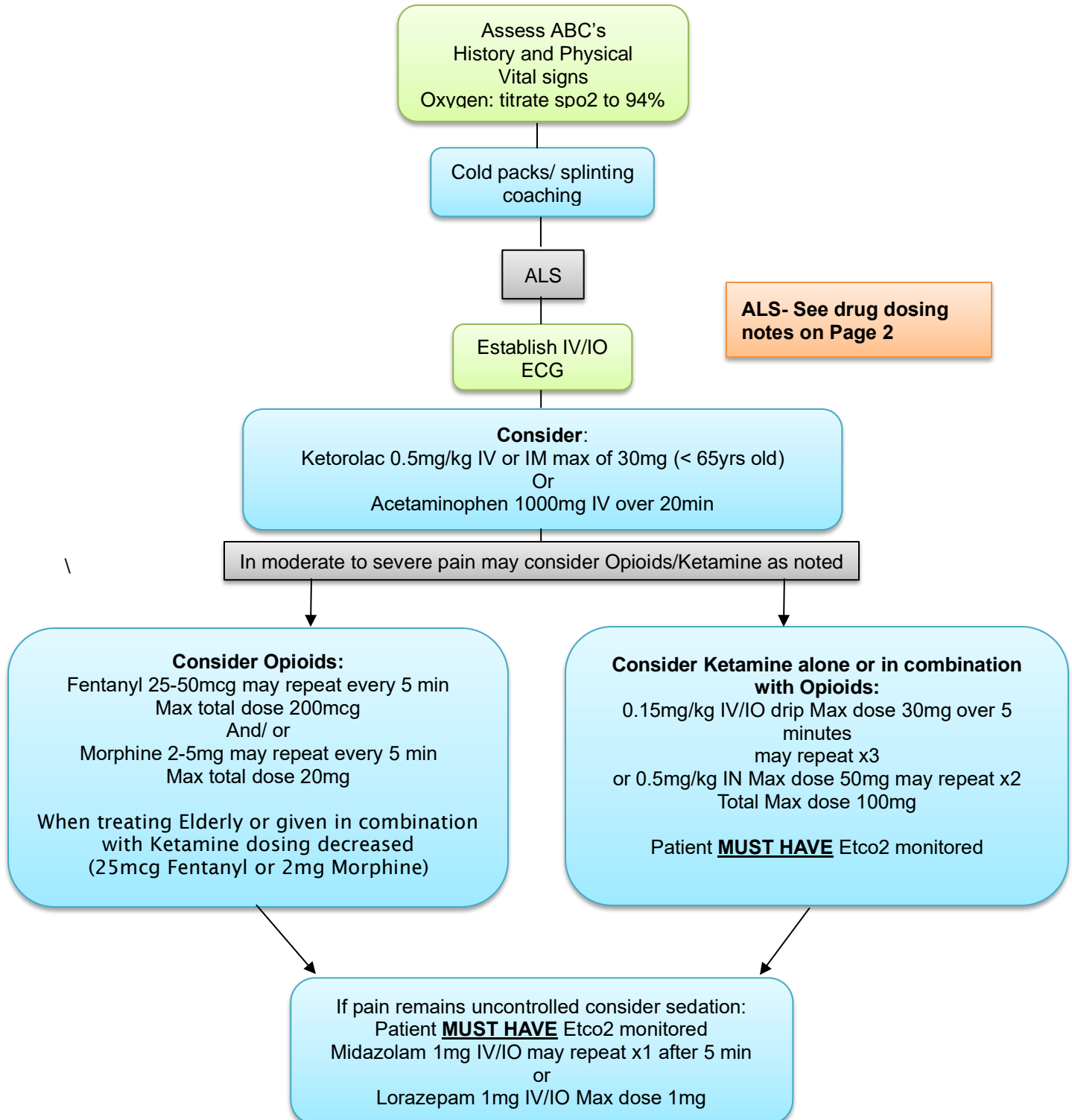
	1202	Pain Management
Nor-Cal EMS Policy & Procedure Manual		Treatment Guidelines
Effective Date: 05/01/2022		Next Revision: 05/01/2024
Approval: Jeffrey Kepple MD – MEDICAL DIRECTOR		SIGNATURE ON FILE

Authority

Health and Safety Code Division 2.5, California Code of Regulations, Title 22, Division 9.



KETAMINE NOTES:

Max single dose of 30mg
Contraindicated with ANY non EMS
initiated concurrent Opioid use
No suspected ETOH or Drug use

May consider Midazolam if pain
remains Uncontrolled- **EXTREME**
caution needed

SEDATION NOTES:

NO ALOC, Multi-system trauma or
traumatic brain injury
Systolic BP must be above 100mmHg
No Hypoxia may exist (Spo2 above
90%)
RR must be greater than 10

OPIOID NOTES:

MAX TOTAL Opioid dose:

20mg of morphine equivalent
200mcg Fentanyl=20mg of Morphine

Systolic BP must be above 100mmHg

Lower doses generally needed if
concurrent use of Ketorolac or
Acetaminophen

Consider ETco2 with larger doses