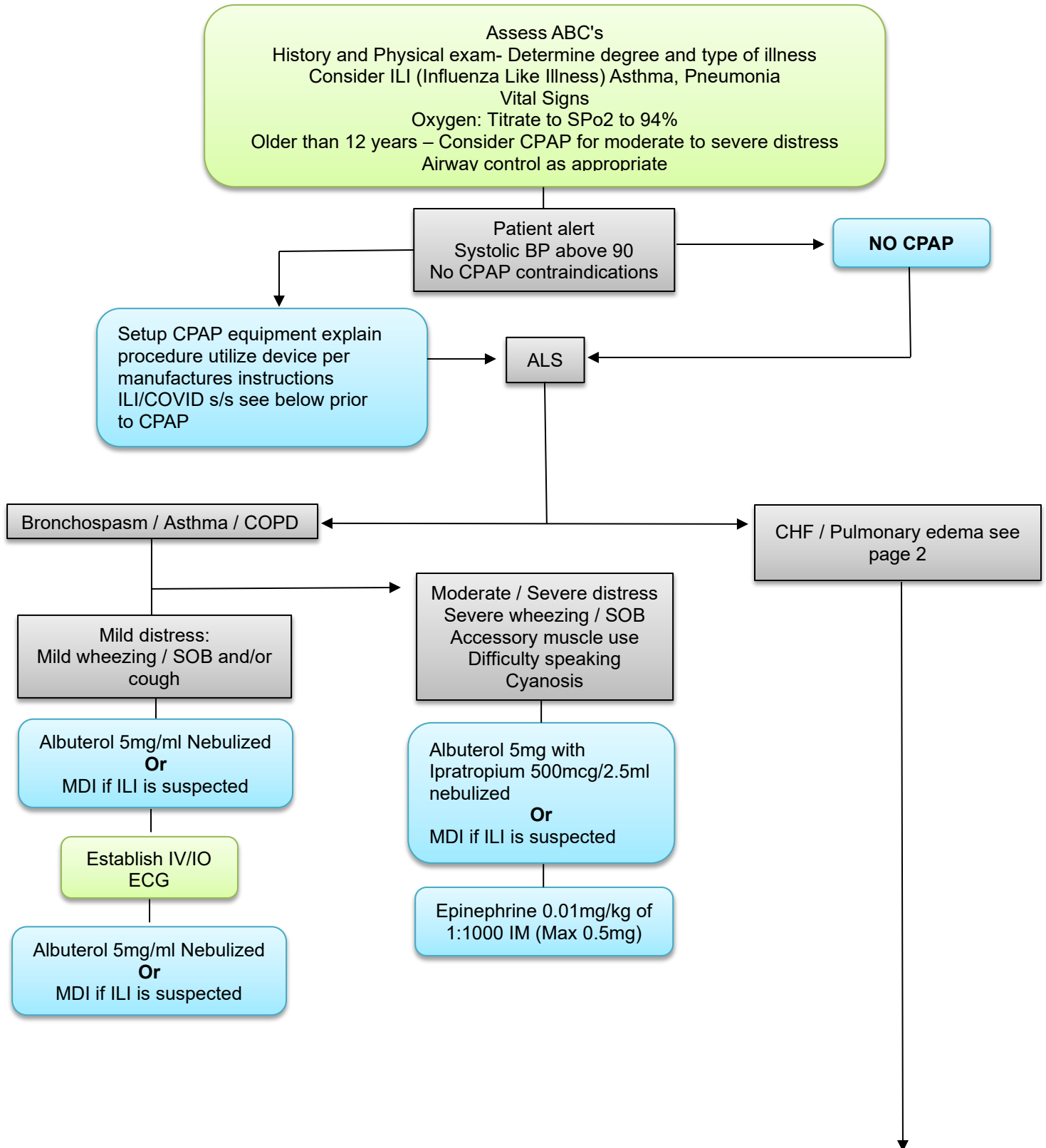
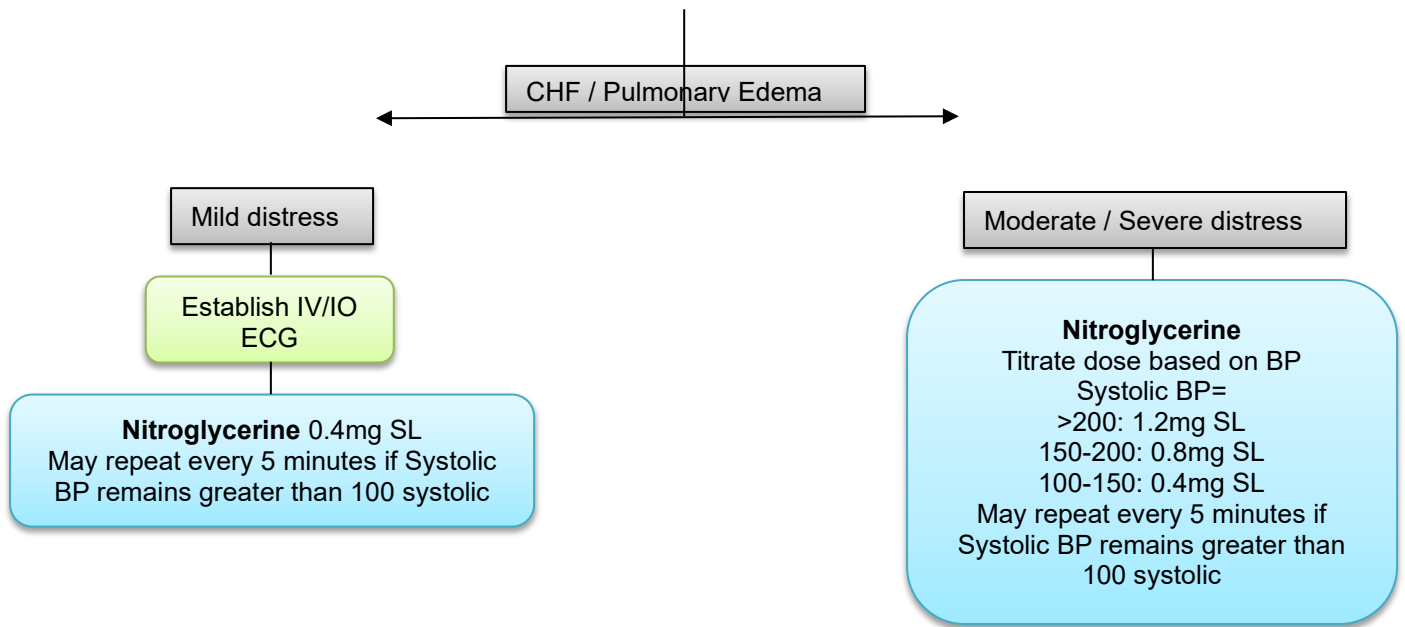


Authority

Health and Safety Code Division 2.5, California Code of Regulations, Title 22, Division 9.





CPAP CONTRAINDICATIONS:

Age Less than 12 years
 Influenza Like Illness (ILI) / COVID19 (Relative contraindication)
 Respiratory arrest, Cardiac arrest, agonal respiration
 Unconscious patient, depressed level of consciousness
 Inability to cooperate / tolerate the device or understand and follow commands for use
 Inability to achieve a good seal
 Suspected Pneumothorax / Barotrauma
 Inability to maintain patent airway
 Major trauma – especially to chest or head (Increased ICP)
 Patient vomiting
 Claustrophobia or inability to tolerate mask (After 1-2 min trial)
 History of pulmonary fibrosis

ILI / COVID **See COVID protocol**

CPAP and nebulizer treatments are high risk to providers

(Ensure good PPE for all personnel in contact PPE SHALL CONTAIN N95/P100, gown and eye protection)

Nebulizers should be avoided and use of Metered Dose Inhaler (MDI) is preferred. If nebulizer treatment is provided it SHALL be completed in an outdoor environment with full PPE for providers.

ILI COVID Signs/Symptoms include:
 Cough
 Fever
 Fatigue
 Sputum production
 Sore throat
 Headache
 Respiratory distress
 Acute loss of taste and smell

Receiving facility should be notified of any suspicion of ILI/COVID