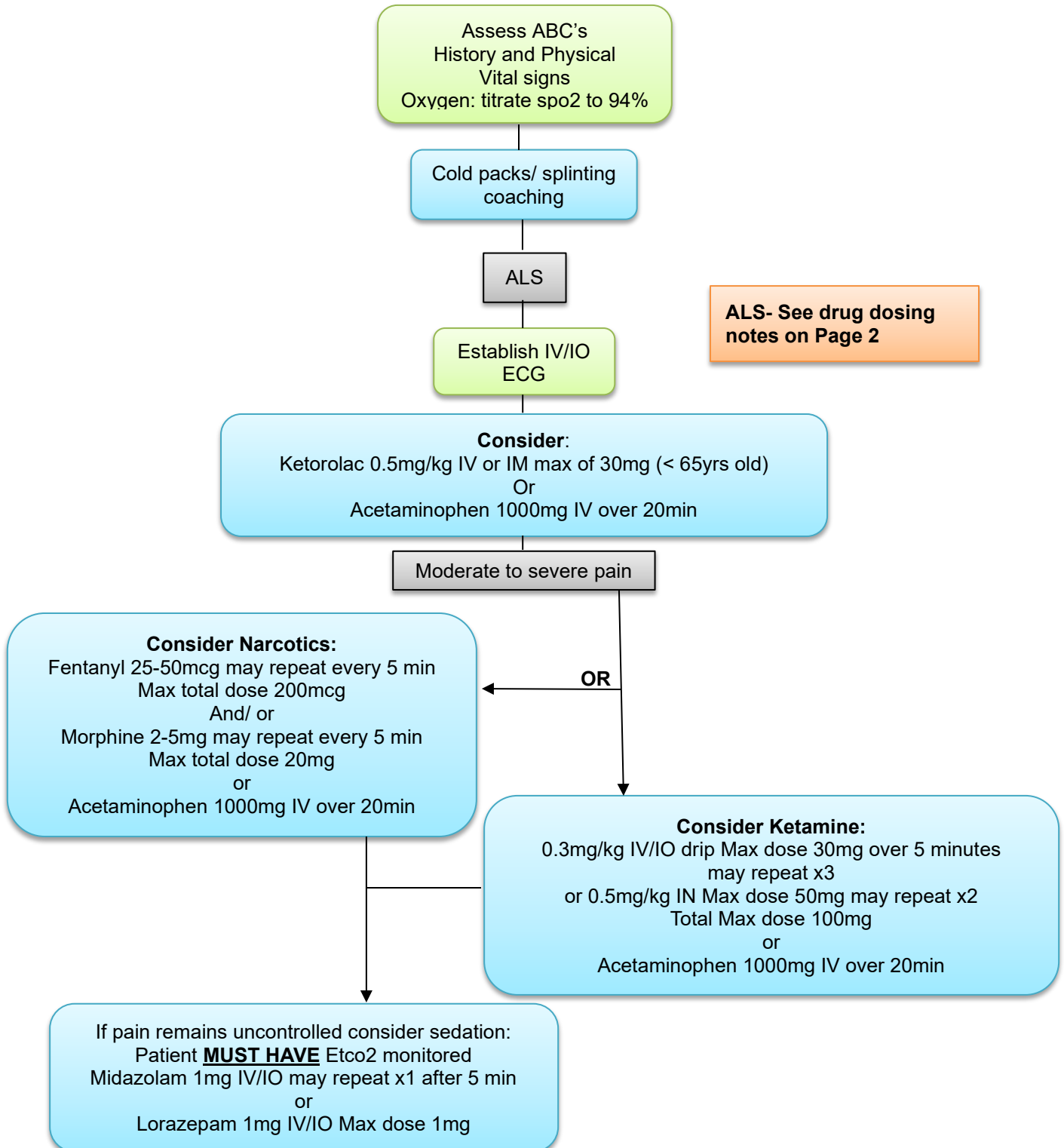
	1202	Pain Management
Nor-Cal EMS Policy & Procedure Manual		Treatment Guidelines
Effective Date: 03/01/2021		Next Revision: 03/01/2021
Approval: Jeffrey Kepple MD – MEDICAL DIRECTOR		SIGNATURE ON FILE

## Authority

Health and Safety Code Division 2.5, California Code of Regulations, Title 22, Division 9.



**KETAMINE NOTES:**

Max single dose of 30mg  
**NO Concurrent use of Opiate**  
No suspected ETOH or Drug use

May consider Midazolam if pain remains Uncontrolled- **EXTREME** caution needed

**SEDATION NOTES:**

NO ALOC, Multi-system trauma or traumatic brain injury  
Systolic BP must be above 100mmHg  
No Hypoxia may exist(Spo2 above 90%)  
RR must be greater than 10

**OPIOID NOTES:**

**MAX TOTAL Opioid dose:**

20mg of morphine equivalent  
200mcg Fentanyl=20mg of Morphine

Systolic BP must be above 100mmHg

Lower doses generally needed if concurrent use of Ketorolac or Acetaminophen

Consider ETco2 with larger doses