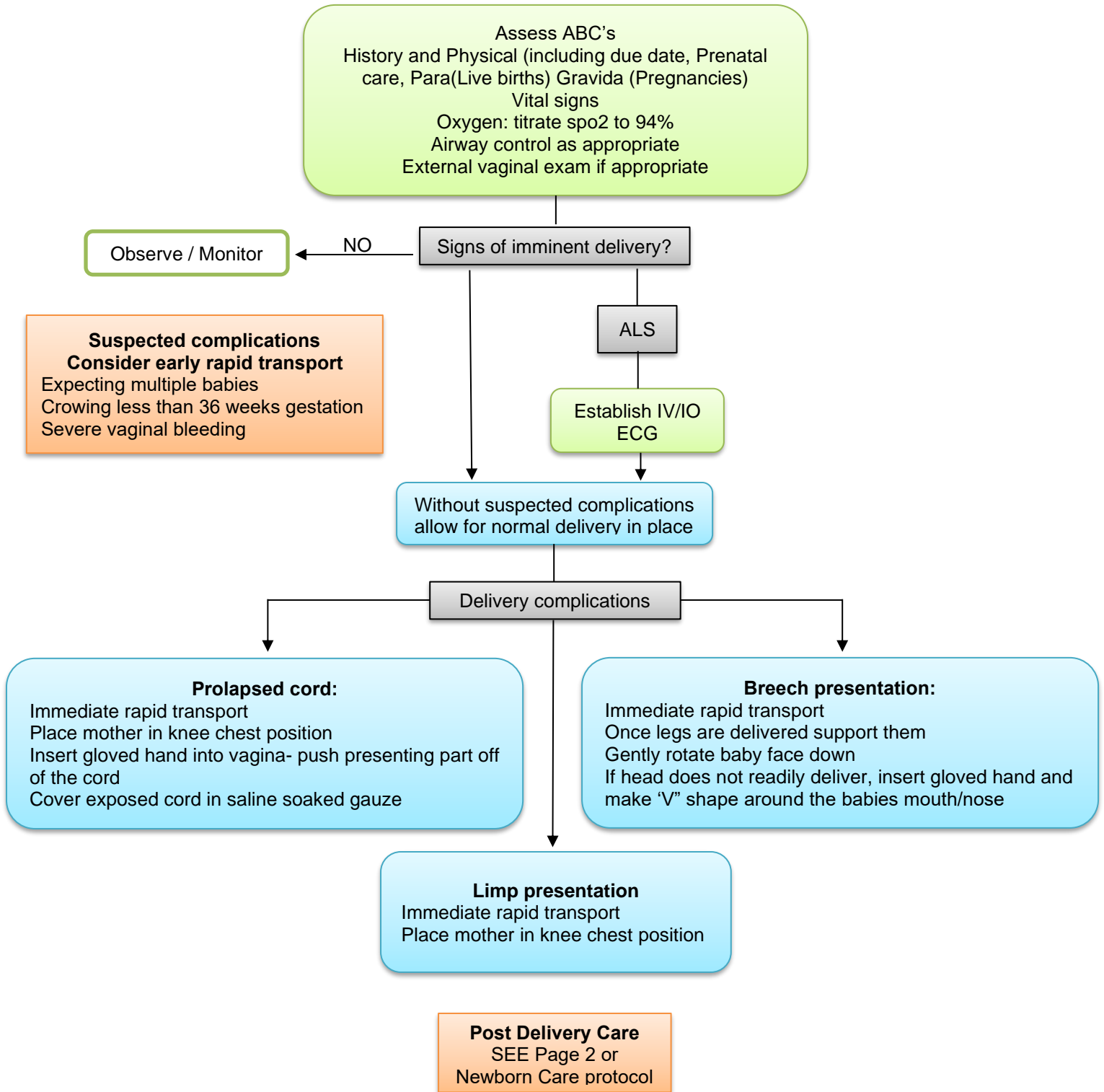
	1501	OB / GYN Delivery and Post care
Nor-Cal EMS Policy & Procedure Manual		Treatment Guidelines
Effective Date: 02/01/2021		Next Revision: 02/01/2023
Approval: Jeffrey Kepple MD – MEDICAL DIRECTOR		SIGNATURE ON FILE

Authority

Health and Safety Code Division 2.5, California Code of Regulations, Title 22, Division 9.



Warm, dry and stimulate newborn then place to breast and once placenta is delivered begin fundal massage (Until size and firmness of a grapefruit)

Signs of postpartum hemorrhage?

ALS

Establish IV/IO
ECG

Oxytocin 20-40 milliunits/min IV/IO

USING 60 gtts TUBING	
Total Dose	^{500cc bag} gtts/min (ml/hr)
20 milliunits/min	60
40 milliunits/min	120

Consider TXA
1 Gram over 10 minutes

USING 10 gtts TUBING	
Total Dose	^{100cc bag} gtts/min
1 Gram	100

Clamp cord at 7 and 10 inches from baby and cut.
Imperative to keep neonate warm
See newborn care protocol

Do not pull on cord to deliver placenta
Do not delay transport waiting for delivery of placenta
Once delivered place placenta in plastic bag and transport with mother
Keep mother and newborn warm throughout